

How does this occur?


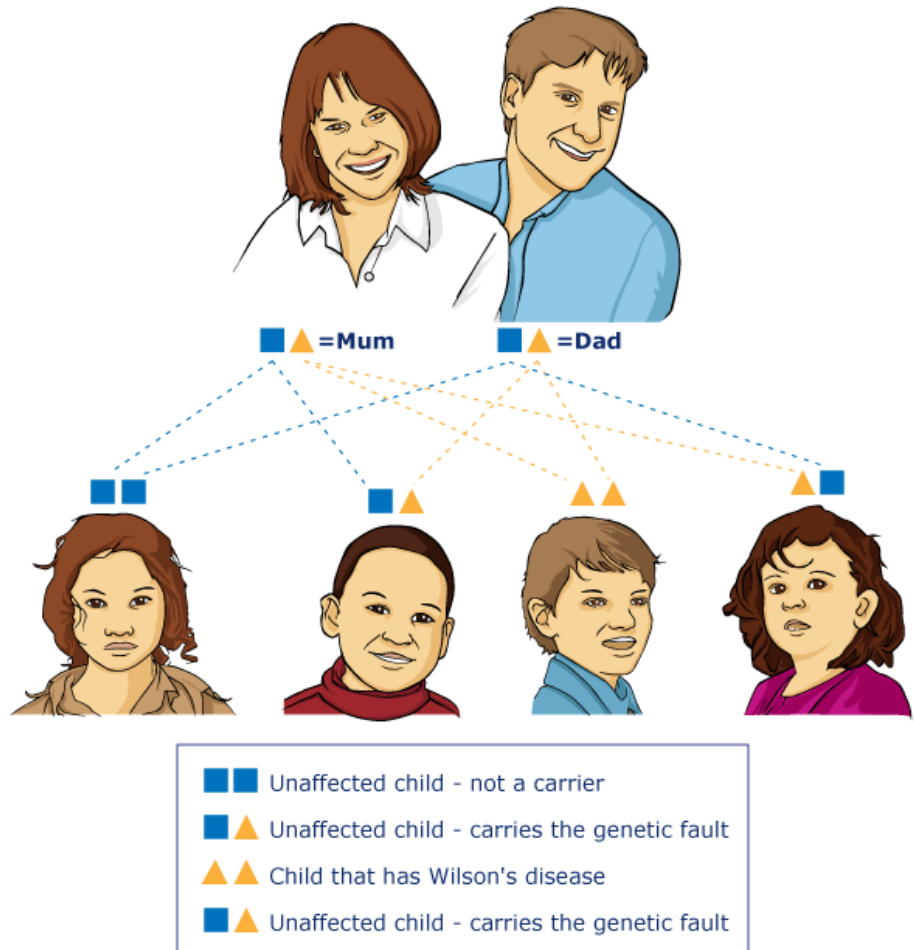

 Download booklet

Diagram V shows you how this happens.

Diagram V



In this diagram both mum and dad carry the same genetic defect (orange triangle). Each time that mum gets pregnant, there is a one in four chance that the child will inherit the genetic defect from both parents and will be born with Wilson's disease.

- Wilson's disease for younger people
- Wilson's disease for patients and families
- What is Wilson's disease?
- What are the signs and symptoms of Wilson's disease?
- Metabolic pathway of copper
- How have I or my child got this condition?
- How does this occur?
- Diagnostic tests for Wilson's disease
- What is the treatment?
- Treatment compliance
- Pregnancy
- Is carrier detection available?
- Glossary of terms used